

# Manual Supplement

Manual Title:	1550C/1555 Users	Supplement Issue:	<b>5</b>
Part Number:	3593019	Issue Date:	5/13
Print Date:	April 2010	Page Count:	4
Revision/Date:			

---

---

This supplement contains information necessary to ensure the accuracy of the above manual.

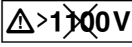
## Change #1, 55569

On page 5, change:

From:

□	Do not use in distribution systems with voltages higher than 1100 V.
---	--

To:

	Do not use in distribution systems with voltages higher than 1100 V.
---	--

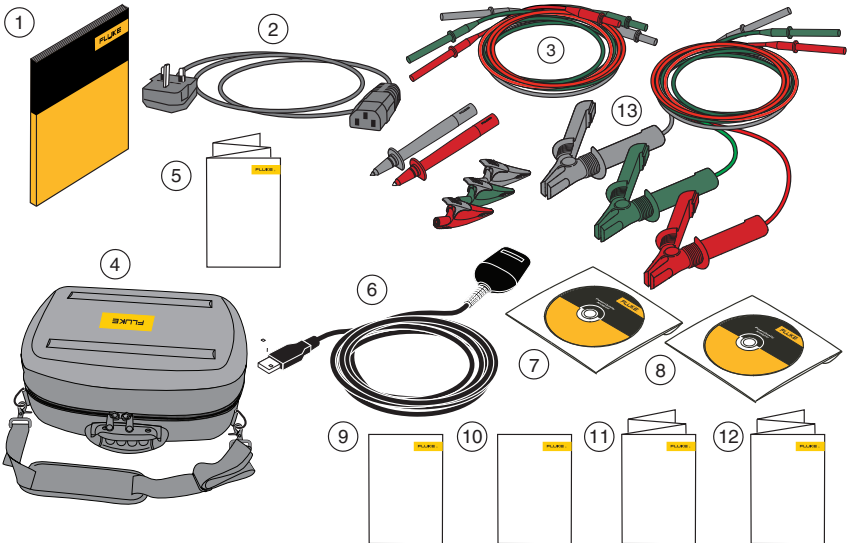
Under **Electrical Specifications** replace the Table with the following:

Insulation		
Test Voltage (DC)	Insulation Resistance Range	Accuracy ( $\pm$ reading)
250 V	< 250 k $\Omega$	unspecified
	250 k $\Omega$ to 5 G $\Omega$	5 %
	5 G $\Omega$ to 50 G $\Omega$	20 %
	> 50 G $\Omega$	unspecified
500 V	< 500 k $\Omega$	unspecified
	500 k $\Omega$ to 10 G $\Omega$	5 %
	10 G $\Omega$ to 100 G $\Omega$	20 %
	> 100 G $\Omega$	unspecified

1000 V	< 1 M $\Omega$ 1 M $\Omega$ to 20 G $\Omega$ 20 G $\Omega$ to 200 G $\Omega$ > 200 G $\Omega$	Unspecified 5 % 20 % unspecified
2500 V	< 2.5 M $\Omega$ 2.5 M $\Omega$ to 50 G $\Omega$ 50 G $\Omega$ to 500 G $\Omega$ > 500 G $\Omega$	unspecified 5 % 20 % unspecified
5000 V	< 5 M $\Omega$ 5 M $\Omega$ to 100 G $\Omega$ 100 G $\Omega$ to 1 T $\Omega$ > 1 T $\Omega$	unspecified 5 % 20 % unspecified
10,000 V	< 10 M $\Omega$ 10 M $\Omega$ to 200 G $\Omega$ 200 G $\Omega$ to 2 T $\Omega$ > 2 T $\Omega$	unspecified 5 % 20 % unspecified
Bar graph range:	0 to 2 T $\Omega$	
Insulation test voltage accuracy:	-0 %, +10 % at 1 mA load current	
Induced ac mains current rejection:	2 mA maximum	
Charging rate for capacitive load:	5 seconds per $\mu$ F	
Discharge rate for capacitive load:	1.5 s/ $\mu$ F	

## Change #2

On page 6, replace Figure 1, with the following:



Replace Item 4 and add Item 13:

④	Soft Carrying Case (Kit includes Hard Case)
⑬	Heavy Duty Alligator Clips (Red, Black, Green) (1555 and Kits only). Available for 1550C as optional accessory: TLK1550-RTLK.

## Change #3


On page 29, under Table 3,

Change:	Rugged Alligator Clamps	3611951
To:	Rugged Alligator Clamp Leads	4112351

## Change #4, 65440, 65598

On page 1, delete the last paragraph on the page.

On page 5, add the following to the **Symbols** table:

	Conforms to relevant South Korean EMC Standards.
CAT II	Measurement Category II is applicable to test and measuring circuits connected directly to utilization points (socket outlets and similar points) of the low-voltage MAINS installation.
CAT III	Measurement Category III is applicable to test and measuring circuits connected to the distribution part of the building's low-voltage MAINS installation.
CAT IV	Measurement Category IV is applicable to test and measuring circuits connected at the source of the building's low-voltage MAINS installation.

On pages 29 & 30, under **General Specifications**, remove the **Enclosure Setting, Electromagnetic Compatibility, Certifications, Safety Compliance** and **Pollution Degree 2** and add:

<b>IP Rating</b> .....	IEC 60529: IP40
<b>Safety</b> .....	IEC 61010-1: 600 V CAT IV / 1000 V CAT III, Pollution Degree 2
<b>Electromagnetic Environment</b> .....	IEC 61326-1: Portable
<b>Electromagnetic Compatibility</b> .....	Applies to use in Korea only. Class A Equipment (Industrial Broadcasting & Communication Equipment) <sup>[1]</sup>

[1] This product meets requirements for industrial (Class A) electromagnetic wave equipment and the seller or user should take notice of it. This equipment is intended for use in business environments and is not to be used in homes.